

# Restoration of Kazimiera Zimblyte (1933–1999) Artworks, Made in Collage Technique

**PAULIUS ZOVĖ**

Lithuanian Art Museum  
Pranas Gudynas Restoration Centre  
Rūdninkų 8, LT-01135, Vilnius, Lithuania  
E-mail: rcgrafika@gmail.com

Kazimiera Zimblyte (1933–1999) – painter abstractionist, author of collages and installations. She's considered as the pioneer of Lithuanian minimalism and abstractionism.

Collages made on large format building pressboard sheets. The surface covered with numerous overlapping, wrinkling, various fragments of paper shapes, creating a unique surface texture. Glued with white glue, it makes rigid thick aggregates under the paper after it dries. Details of thick paper and corrugated cardboard packaging attached only at one edge, variously flanged and unfolded, thus creating the impression of dimensionality. Collage surfaces and details painted in high-gloss, grainy texture bronze color and gray-green paint. Clearly visible stroke marks its aggregates at the paper fragments boundaries and wrinkles.

Dimensional details torn, deformed, crushed to the ground, some fragments missing. The central part of the paper severely damaged, extracted, visible tons of surface dirt. Collage ground – large format cardboard is not enough rigid to lift it

up, doing so it bents. Due to these deformations, parts on cardboard coming off, falling or crack that's why paper layers were decided to glue on.

Artwork's basis reinforced, glued cracks and dimensional details while gluing pressed locally, compressing with small clips. Missing parts were recovered in consideration of silhouettes, predicted by collage unpainted areas. Surface look restored on the basis of remaining detail shapes. Their blanks glued made of corrugated board and kraft paper, or formed of glued together paper layers.

Restored details retouched with tempera and watercolor paints, mixed with bronze powder. In accordance with the works of art restoration ethical and aesthetic principles, restored fragments slightly different in texture and lighter compared to authentic.



ill. 7. K. Zimblytė (KAZĖ). "The composition of the green". The canvas, paper, bronze paint, collage. 90 x 110 cm. Lithuanian Art Museum, inv. no. ED 170414. Collage before restoration. Typical conditions: spatial detail torn, deformed, pressed to the base, some fragments are missing. Painting in the central part of the paper severely damaged. Photo by Vilma Šileikienė, Paulius Zovė.



ill. 11. Collage after restoration. Photo by Vilma Šileikienė, Paulius Zovė.



ill. 8. Collage fragment before restoration. Layers of paper in the damaged central part. Photo by Vilma Šileikienė, Paulius Zovė.



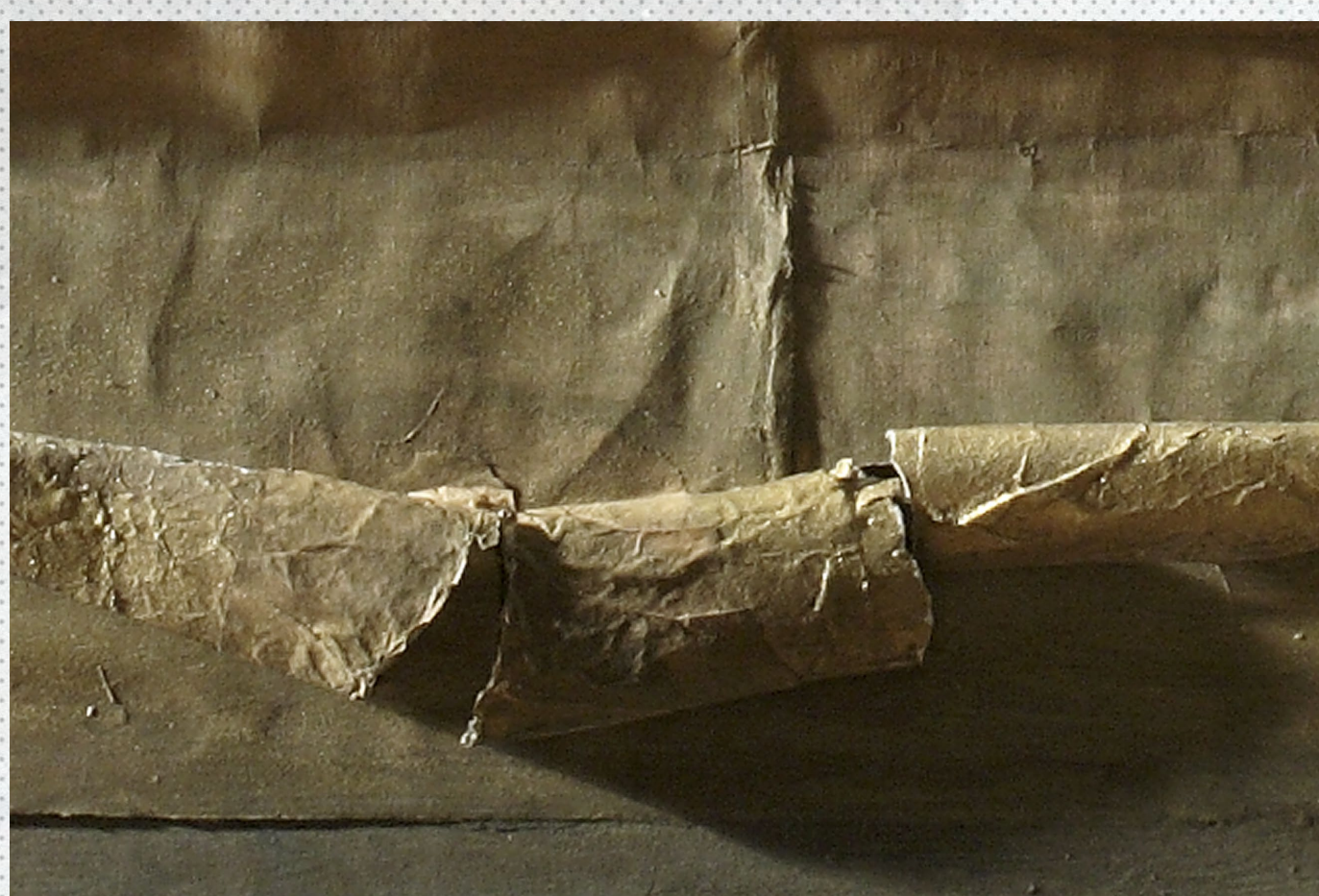
ill. 9. Fragment during the restoration. The missing part created from the thick and rigid paper; toned with tempera and watercolor paints mixed with bronze powder. Photo by Vilma Šileikienė, Paulius Zovė.



ill. 10. Fragment after the restoration. Photo by Vilma Šileikienė, Paulius Zovė.



ill. 1. K. Zimblytė (KAZĖ). "Composition. I". Cardboard, paper, tempera, bronze paint, collage, 104 x 122 cm. Lithuanian Art Museum, inv. no. ED 170437. Collage before restoration. Photo by Vilma Šileikienė, Paulius Zovė.



ill. 2. Fragment before the restoration. Typical conditions: spatial detail torn and deformed. Photo by Vilma Šileikienė, Paulius Zovė.



ill. 3. Fragment during the restoration. Spatial detail glued by inserting a rigid strip of paper. Photo by Vilma Šileikienė, Paulius Zovė.



ill. 4. Fragments during the restoration. Glued spatial detail pressed locally by compressing small clips. Photo by Vilma Šileikienė, Paulius Zovė.



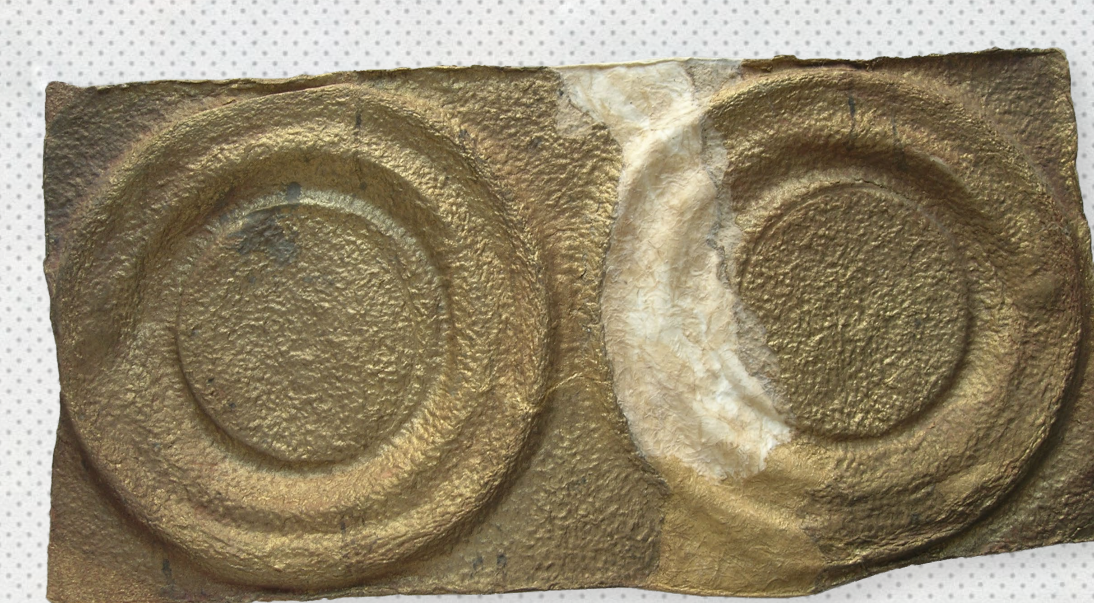
ill. 5. Creating of the missing details. Details made from corrugated cardboard, kraft paper, cut according to the shape of bronze unpainted area; tinted by tempera paint, mixed with bronze powder. Photo by Vilma Šileikienė, Paulius Zovė.



ill. 12. K. Zimblytė (KAZĖ). "The festival in Vilnius. Trumpeting". Cardboard, paper, bronze paint, collage, 130 x 102 cm. Lithuanian Art Museum, inv. no. ED 170438. Collage at the beginning of restoration. Photo by Vilma Šileikienė, Paulius Zovė.



ill. 13. Creating of the detail of collage: it is formed from layers of paper glued together according to sculpted form of the plaster. Photo by Vilma Šileikienė, Paulius Zovė.



ill. 14. Collage detail during the restoration. Retouching by tempera paint, mixed with bronze powder. Photo by Vilma Šileikienė, Paulius Zovė.



ill. 6. Collage after restoration. Photo by Vilma Šileikienė, Paulius Zovė.



ill. 15. Collage after restoration. Photo by Vilma Šileikienė, Paulius Zovė.